



Tuottavuuden ja
parhaan
käyttökokemuksen
turvaaminen
hybridityömaailmassa:
Work Happy!

Riku Reimaa
Technical Pre-sales and Technology Evangelism
Northern Europe | Finland and the Baltics
riku@hp.com



HP WOLF SECURITY



Tapamme tehdä töitä ja oppia on kokenut pysyvän muutoksen



A close-up photograph of a young child with light blue eyes and brown hair. The child's hands are covered in multi-colored paint (red, yellow, green, blue, purple) and are positioned to frame their face. The child is wearing a blue garment. The background is dark and out of focus.

Innovaatioita

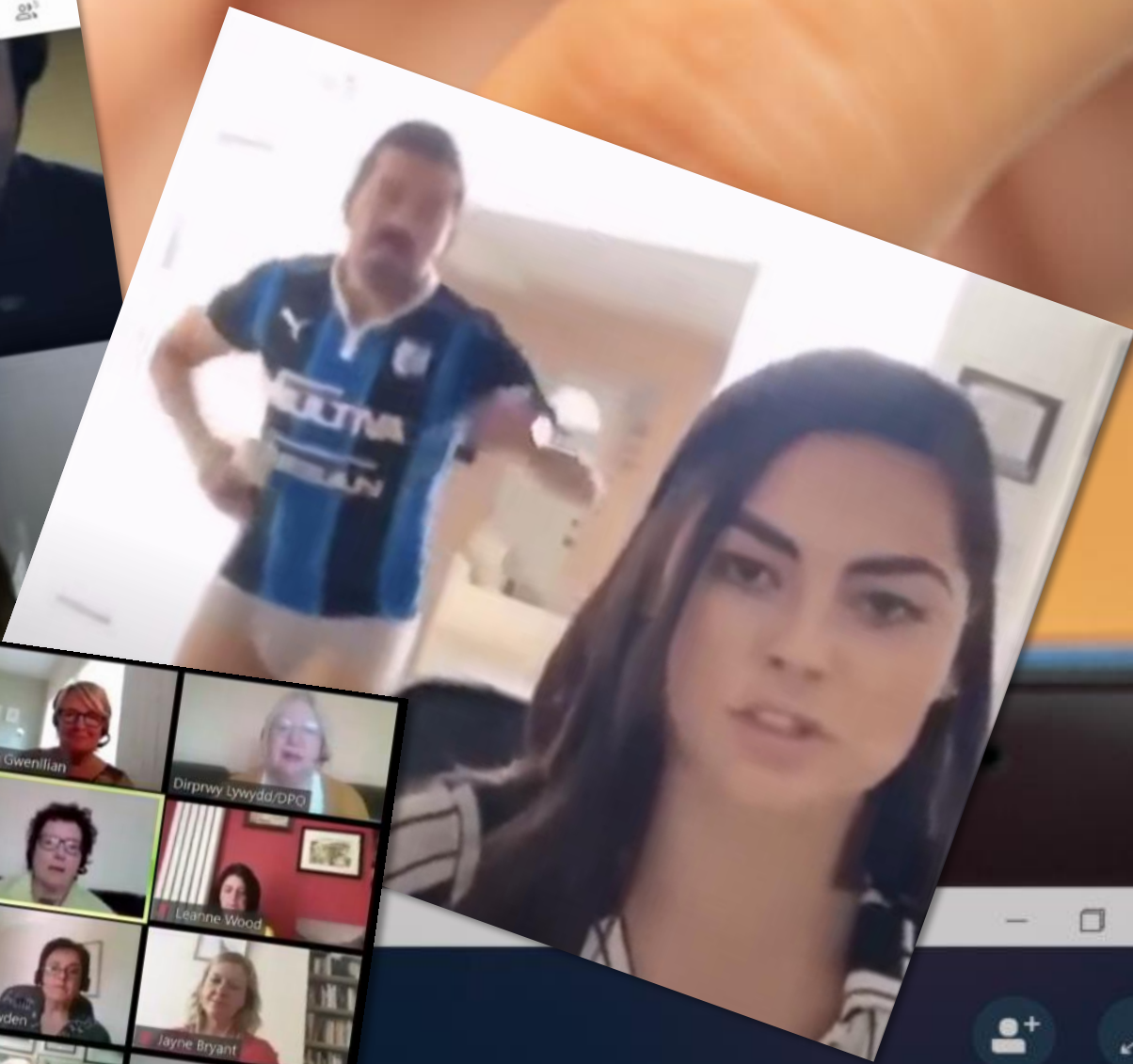








HP Drive



PARTICIPANTS
enters (3)
Lynch
Barton
n Brown




Invite More People

Participant Actions



HP Sure View



**HP SURE VIEW INTEGRATED
PRIVACY SCREEN**

Helps keep data protected
from visual hackers

You are opening a sensitive document.
HP Sure View will turn on automatically.

Don't show this again

OK



Yli 20 vuotta innovaatioita

Luomassa päätelaitteen tietoturvan standardeja
TPM, BIOS



TRUSTED[®]
COMPUTING
GROUP

NIST
National Institute of
Standards and Technology



Innovatiivisuutta tietoturvan kehityksessä ja
laitteisto –tason suojauksessa



Alan johtavat kumppanuudet ja alustat
(Intel[®], AMD[®] ja Microsoft[®])

Investointeja tietoturvaan



HP WOLF SECURITY

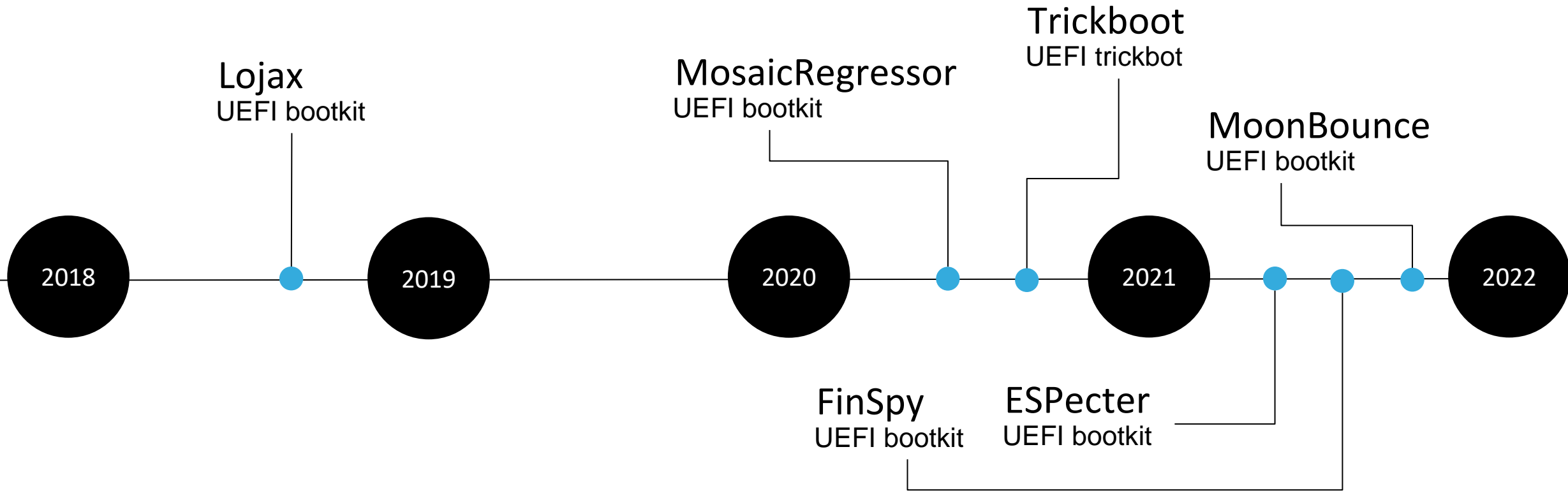
Tietoturva

on osa

HP:n

DNA:ta

Laitteisto –tason hyökkäykset nousussa



83%

Microsoft Security Signals –tutkimukseen vastanneista tietoturvan ammattilaisista olivat kokeneet firmware –tason hyökkäysten kasvun 2019 – 2022 välisenä aikana.





HP:n keskeiset prioriteetit

JOHTAJUUS PÄÄTELAITTEIDEN SUOJAAMISESSA

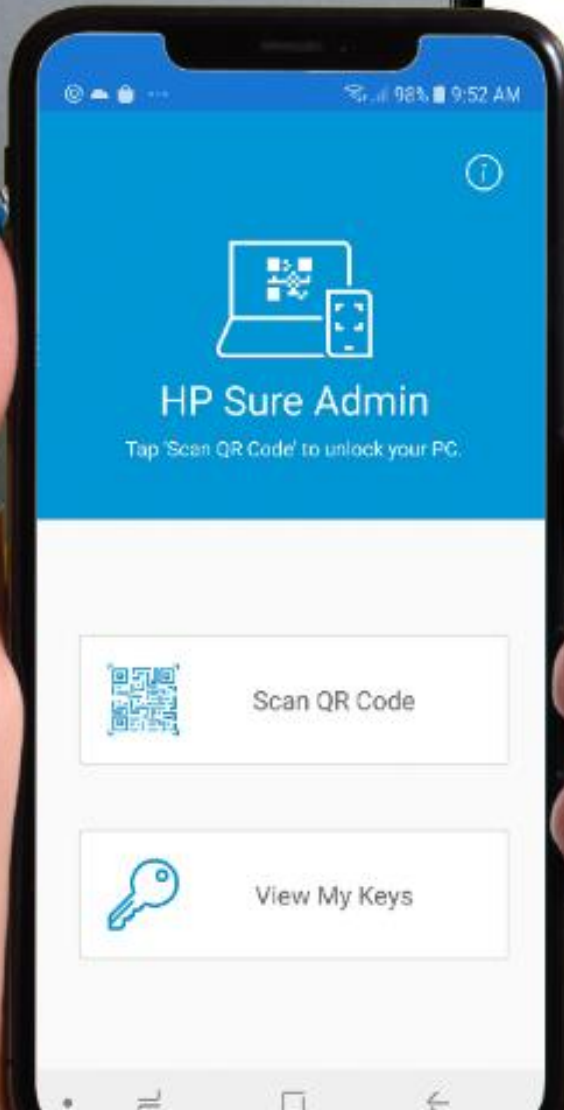
Päätelaitteiden suojaus
SISÄISILTÄ uhilta

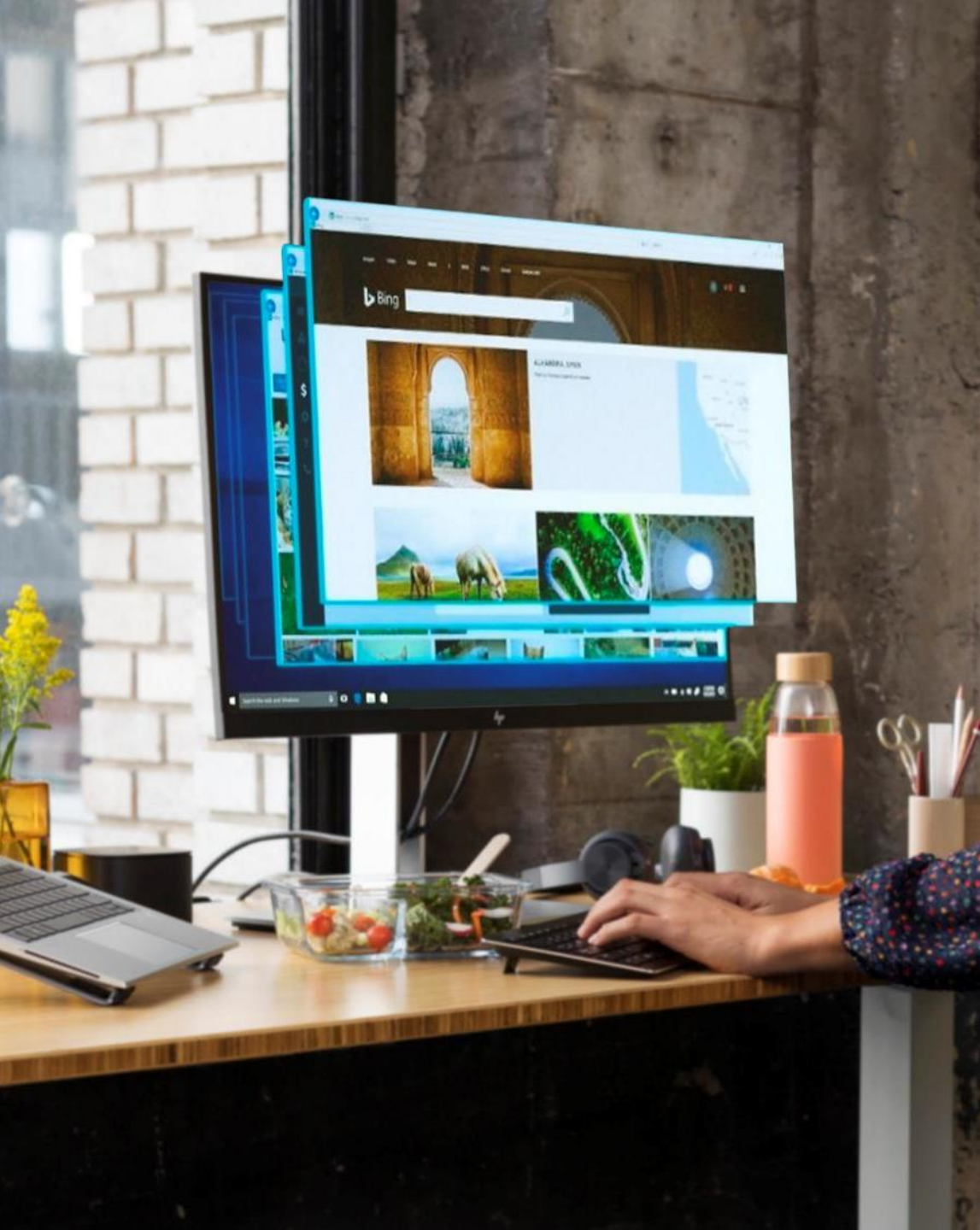


Päätelaitteiden suojaus
ULKOISILTA uhilta









Live View



Micro-VM 0009

Application: Secure Browser

File: WS 2012 Data Sheet_All U

Uptime: 01:27:30



Micro-VM 0008

Application: Microsoft Word

File: WS 2012 Feature Compari

Uptime: 01:27:41



Micro-VM 0007

Application: Secure Browser

Domain: onedrive.live.com

Tabs: 1

Uptime: 01:43:36



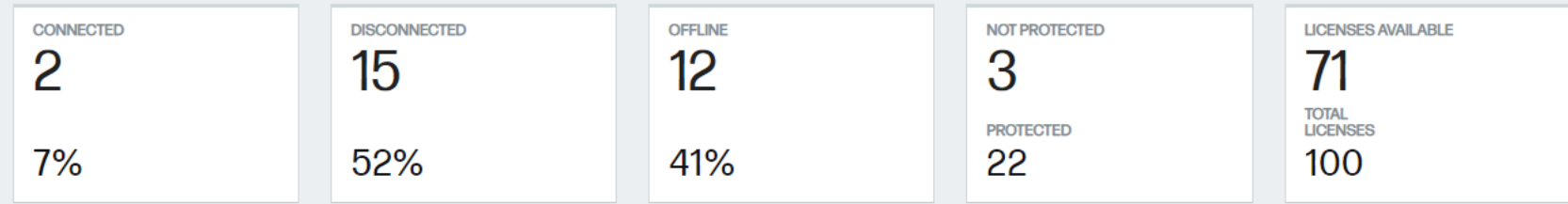
Micro-VM 0003

Application: Secure Browser



- Device Security
 - Dashboard
 - Devices
 - Device Groups
 - Remote Commands
 - Management Actions
- Malware
- Credential Protection
- Sure Access Enterpri...
- Configuration
- Events
- Support
- Settings

Device Security Dashboard



Devices Requiring Attention

8 DEVICES
[View all](#)

10 MANAGEMENT ACTIONS

Severity	Management Action	Devices	Type
● CRITICAL	System template creation has failed	2	● Product
● CRITICAL	An internal error is present	1	● Product
● CRITICAL	No supported Windows language pack is installed	1	● Environmental
● HIGH	Require Secure Boot third party key in order to support Hyper-V	1	● Environmental
● HIGH	The last attempt to contact the HP Threat Intelligence Service was unsuccessful	1	● Environmental



Threat UUID: 986c551f-28a9-42f6-b1e4-777374aab34e

- SUMMARY
- GRAPH
- FILES
- BEHAVIORAL
- NETWORK
- EMAIL INFO

SEVERITY **High** TOTAL EVENTS **707** HIGH SEVERITY EVENTS **23**

X360-1040-G6-SH X360-1040-G6-SH\Proactive

Threat triggered for Microsoft Word because 14 suspicious activities were detected. The triggering event was reported because of the 'cmd.exe launched' behavior. This event occurred after the micro-VM had been running for 4 seconds.

Initiated By: User Action
Threat Response: Isolated
Detected: September 22, 2021 3:49 p.m.
Received: September 22, 2021 3:53 p.m.
Updated: September 22, 2021 3:53 p.m.

Threat Ingress Details

Time September 22, 2021 3:49 p.m.
Original File Name CV_Edward_Teach.doc
Process outlook.exe



Threat Indicators

HP Threat Intelligence Response

- bromium_test_malware
- edward_teach_cv

MITRE | ATT&CK™

- TA0001: Initial Access 1
 - T1193 - Spearphishing Attachment
- TA0002: Execution 3
 - T1106 - Execution through API
 - T1129 - Execution through Module Load
 - T1086 - PowerShell
- TA0003: Persistence 1
 - T1215 - Kernel Modules and Extensions
- TA0004: Privilege Escalation 0
- TA0005: Defense Evasion 4
 - T1107 - File Deletion
 - T1112 - Modify Registry
 - T1027 - Obfuscated Files or Information
 - T1102 - Web Service
- TA0006: Credential Access 0
- TA0007: Discovery 1
 - T1082 - System Information Discovery

Sijainnin mukaan

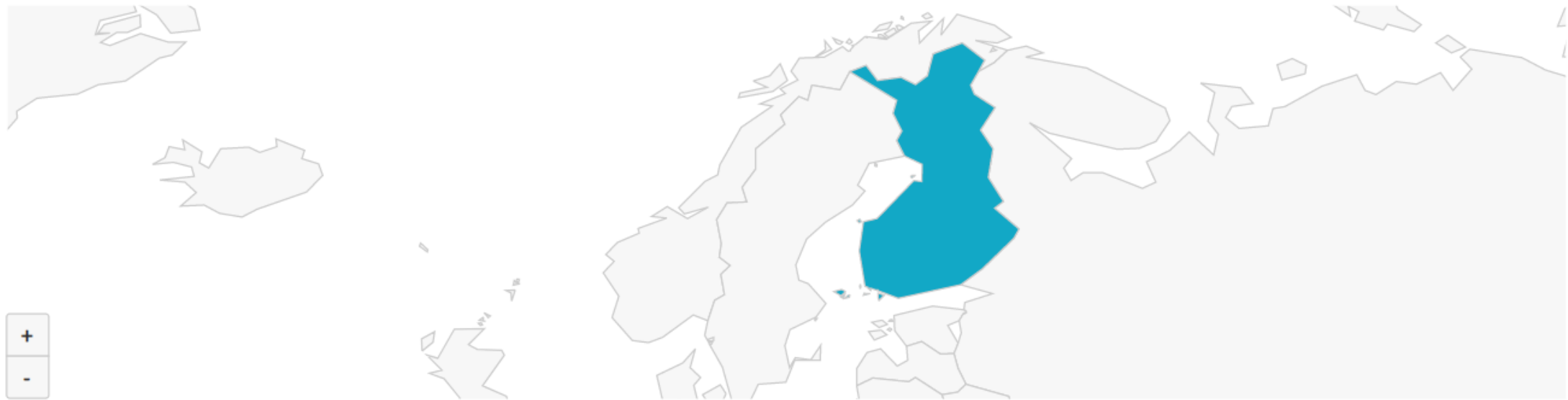
Laitteen kokoonpanon mukaan

Laitemallin mukaan

Käyttöjärjestelmän mukaan

Tiedot

Laitteistoinventaario sijainnin mukaan





Koontinäyttö

Kokemusten hallinta

Oma organisaatio

Asiakkaat

Lokit

Ohje ja tuki

Uudet ominaisuudet

Koontinäyttö

Näytä
Päivitykset

Kesto

Lisää pienenohjelma

Lisää

Laitteiston vaihto



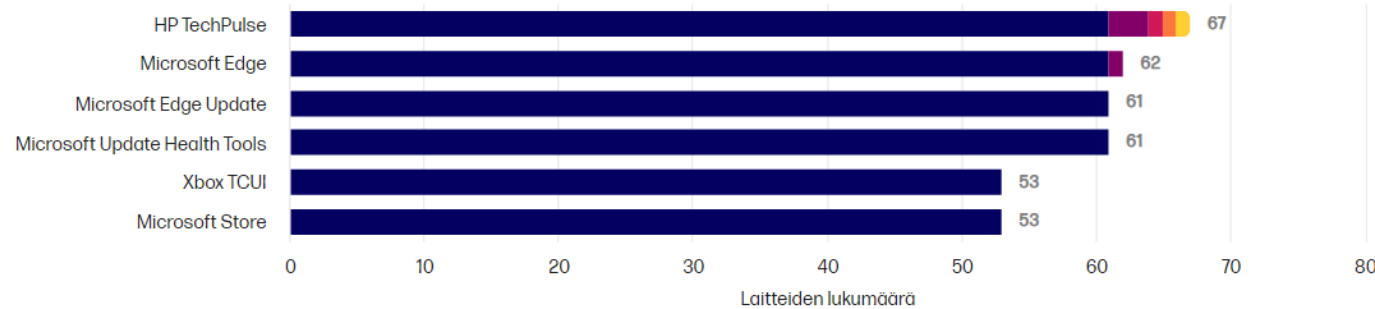
Vaihda heti Kunnossa -

Päivitystarpeet



Kriittinen Suositeltu Tavallinen

Ohjelmistoinventaario



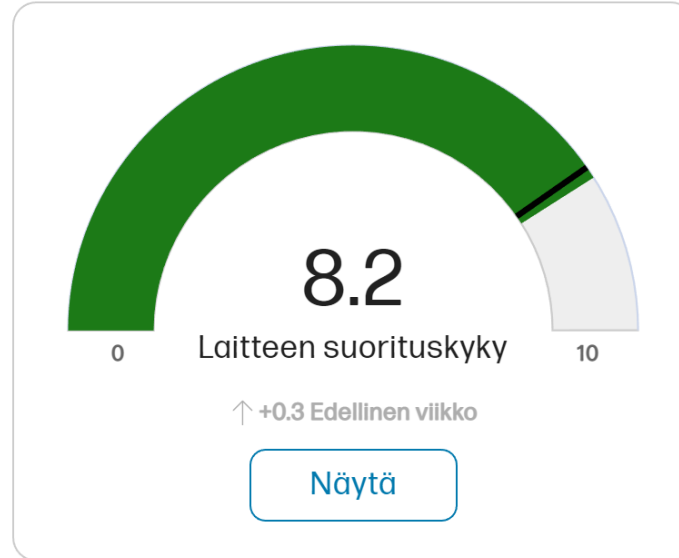
Suositellut toimet

43

Laitteet vanhentuneella BIOSilla
ilman käytäntöä

Näytä

Digitaalinen kokemus tällä viikolla



Disk Capacity



1

Levyn koko
kapasiteetti
käytössä

Thermal Grading



Hyvä lämpötilaluokitus

Kaikkien PC:iden lämmöt ovat
kunnossa

Verkon nopeus (langaton ja kiinteä lähiverkko)



>50 Mbps







HP WOLF SECURITY

KIITOS



Дякую